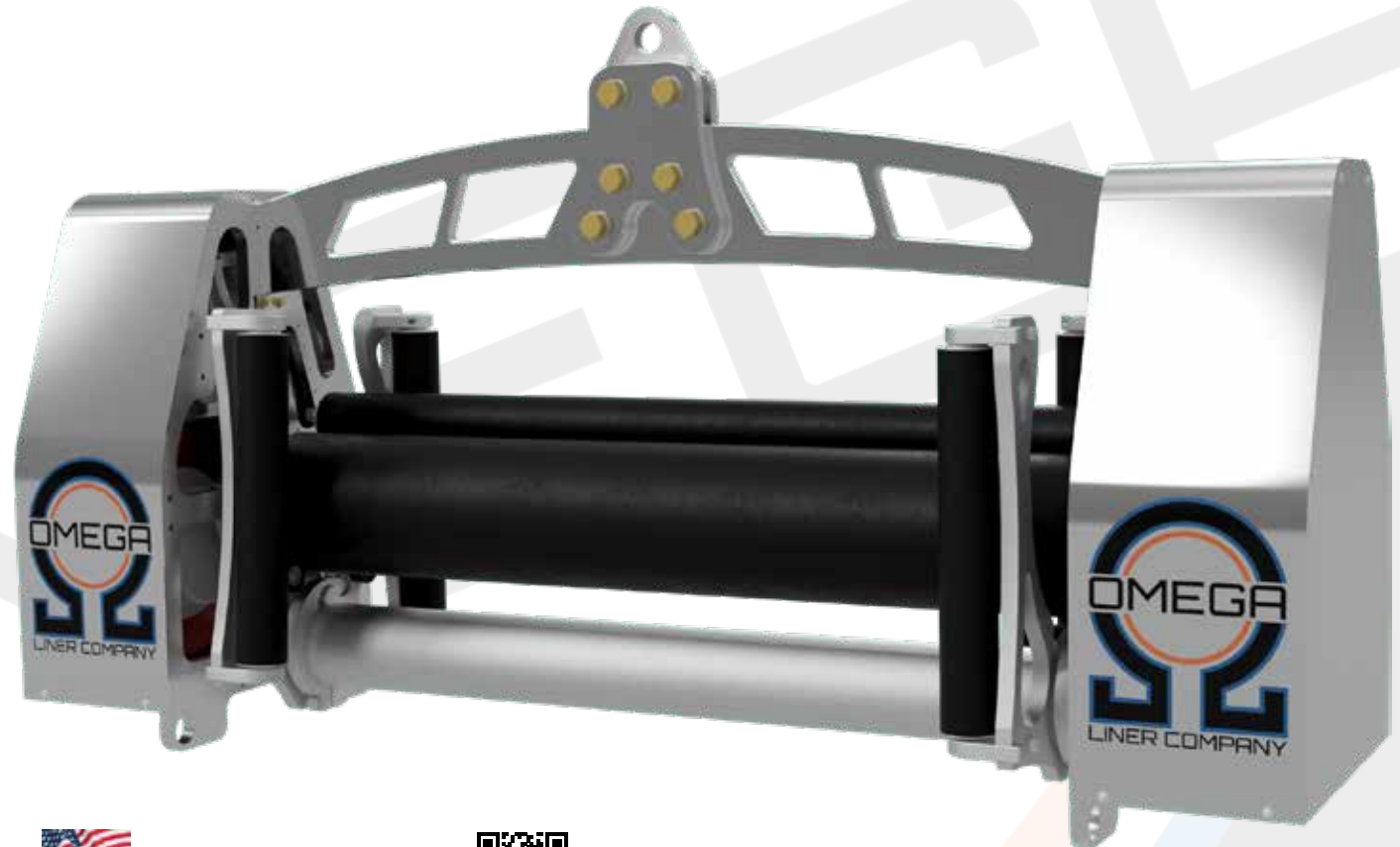


FR Series

Specialized liner handling systems designed to handle the most challenging liner installations.



Scan for Video:



Features

- Patented design
- Aircraft grade aluminum
- Variable speed drive
- 40' Wired remote
- Sealed to dust and water

Electrical System

- 240v
- 5000 watt
- Built in 50' cord
- Area floodlighting

Capacities

- FR1400**
- 36" Flat Liner
 - 7500lb working load

- FR2800**
- 72" Flat Liner
 - 5000lb working load

